

## Technical data sheet

Power supply · Compact Economy, 120 W

---

**Primary switchmode power supply, PFC, Single-phase**

**Input: wide-range input AC 85–264 V, DC 110–345 V**

**Output: DC 24 V, 5 A**



---

### Identification

Type CPSB1-120-24E  
Part No. [723500](#)

---

### Product version

Datasheet version 01

---

### Input

Number of phases 1  
Rated voltage  $U_N$  AC 120/240 V  
Operation voltage range AC 85–264 V / DC 110–345 V  
Frequency range 47 Hz – 63 Hz  
Rated current  $I_N$  2.1 A @ AC 120 V / 1.2 A @ AC 240 V  
Inrush current  $\leq 30$  A / 0.72 A<sup>2</sup>s  
Internal fuse T3, 15 A/AC 250 V  
External protection Mini-circuit breaker: C 6 A / Fusible link: T 10 A  
Power factor correction P.F.C.  $>0.6$

---

### Output

Output voltage/current DC 24 V/5 A  
Rated voltage  $U_N$  DC 24 V  
Rated current  $I_N$  5 A  
Max. output current 7 A, 5 s  
Power Dissipation  $<18$  W  
Setting range  $U_{out\ min.}/U_{out\ max.}$  DC 23–28 V  
Load regulation  $<1$  %

---

#### United Kingdom: LÜTZE Ltd.

Unit 3, Sandy Hill Park  
Sandy Way, Amington • GB-Tamworth, Staffs B77 4DU  
Tel. +44 (0)1827 31333-0 • Fax +44 (0)1827 31333-2  
[www.lutze.com](http://www.lutze.com) • [sales.gb@lutze.co.uk](mailto:sales.gb@lutze.co.uk)

#### Germany: Friedrich Lütze GmbH

Postfach 12 24 (PLZ 71366) • Bruckwiesenstraße 17-19 • D-71384 Weinstadt  
Tel. +49 (0)7151 6053-0 • Fax +49 (0)7151 6053-277(-288)  
[www.luetze.de](http://www.luetze.de) • [info@luetze.de](mailto:info@luetze.de)

22.09.2023 • Subject to technical modification

Part No. [723500](#) • Datasheet version: 01

page 1 of 4



SYSTEMATIC TECHNOLOGY

## Technical data sheet

### Power supply · Compact Economy, 120 W

---

Ripple and noise	<60 mV
Hold up time	>20 ms @ AC 120 V / 50 ms @ AC 230 V
Parallel / redundant mode	Yes/via external decoupling diode e.g. 722999
Efficiency	>87 %
Overtemperature protection	Yes
Over voltage protection	≥DC 33 V
Short circuit	Hiccup Mode

---

#### Status indication

---

Status indication DC ON LED green	≥21.6 V
Status indication DC LOW LED red	≤21.6 V

---

#### Monitoring

---

DC ON Control (Rdy)	N/O contact
Switching voltage	AC 300 V / DC 150 V
Switching current	AC/DC 1 A
Switching capacity	300 VA / 30 W
Isolation voltage	AC 500 V

---

#### General

---

Insulation voltage input / output	DC 4.2 kV
Insulation voltage input / ground	DC 2.2 kV
Insulation voltage output / ground	DC 750 V
Derating	>60 °C: -2.4 W/°C
Cooling	Air convection, 50 mm distance top/bottom, 20 mm side
Housing material	Aluminum
Mounting	DIN rail mountable TS35 (EN 60715)
Installation position	Vertical
Degree of protection	IP20 (IEC 529 / EN 60529)
Protection class	I
Weight/unit	0.45 kg
Connection type	Screw terminal 0.20 mm <sup>2</sup> – 2.5 mm <sup>2</sup> plug-in
Dimensions (w × h × d)	40.0 mm × 115.0 mm × 110.0 mm
PU (units)	1

---

#### General ambient conditions

---

Operation temperature range	-40 °C ... +70 °C (UL approved up to +60 °C)
Storage temperature range	-40 °C ... +80 °C
Over voltage category	III
Degree of pollution	2
Relative air humidity	5 – 95 % RH, non-condensing

---

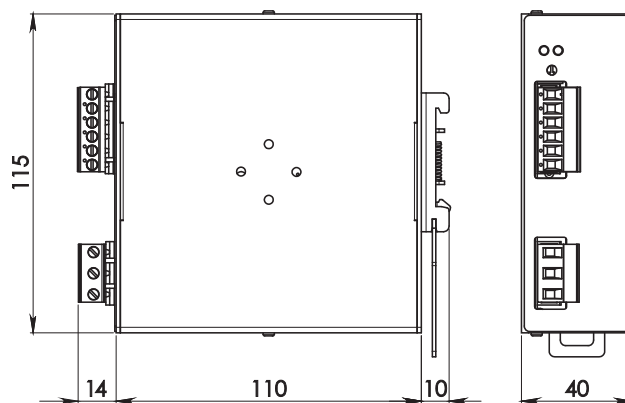
# Technical data sheet

Power supply · Compact Economy, 120 W

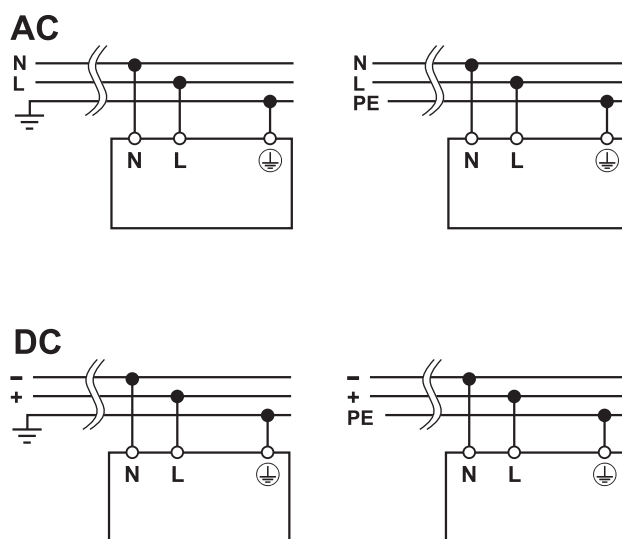
## Certifications/Standards

Certifications	CE UKCA cULus (E249179)
Standards	UL 508 IEC/EN 61010-1 IEC/EN 61010-2-201 IEC/EN 60950 EN 55011 (CISPR11) Class A EN 55022 (CISPR22) Class A EN 61000-4-2 Level 3 EN 61000-4-3 Level 3 EN 61000-4-4 Level 3 EN 61000-4-5 Level 3 EN 61000-4-11 Level 2 IEC 60068-2-6 (Vibration sinusoidal), 5-17.8 Hz: $\pm 1.6$ mm, 17.8-500 Hz: 2 g 2 hours / axis (X,Y,Z) IEC 60068-2-27 (Shock), 30 g 6 ms, 20 g 11 ms, 3 bumps / direction, 18 bumps total

## Dimensions



## PIN assignment

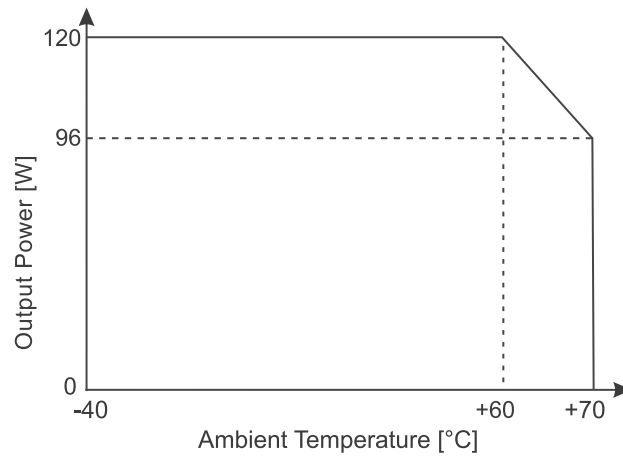


## Technical data sheet

Power supply · Compact Economy, 120 W

---

### Derating



### Short circuit characteristics

#### Hiccup

